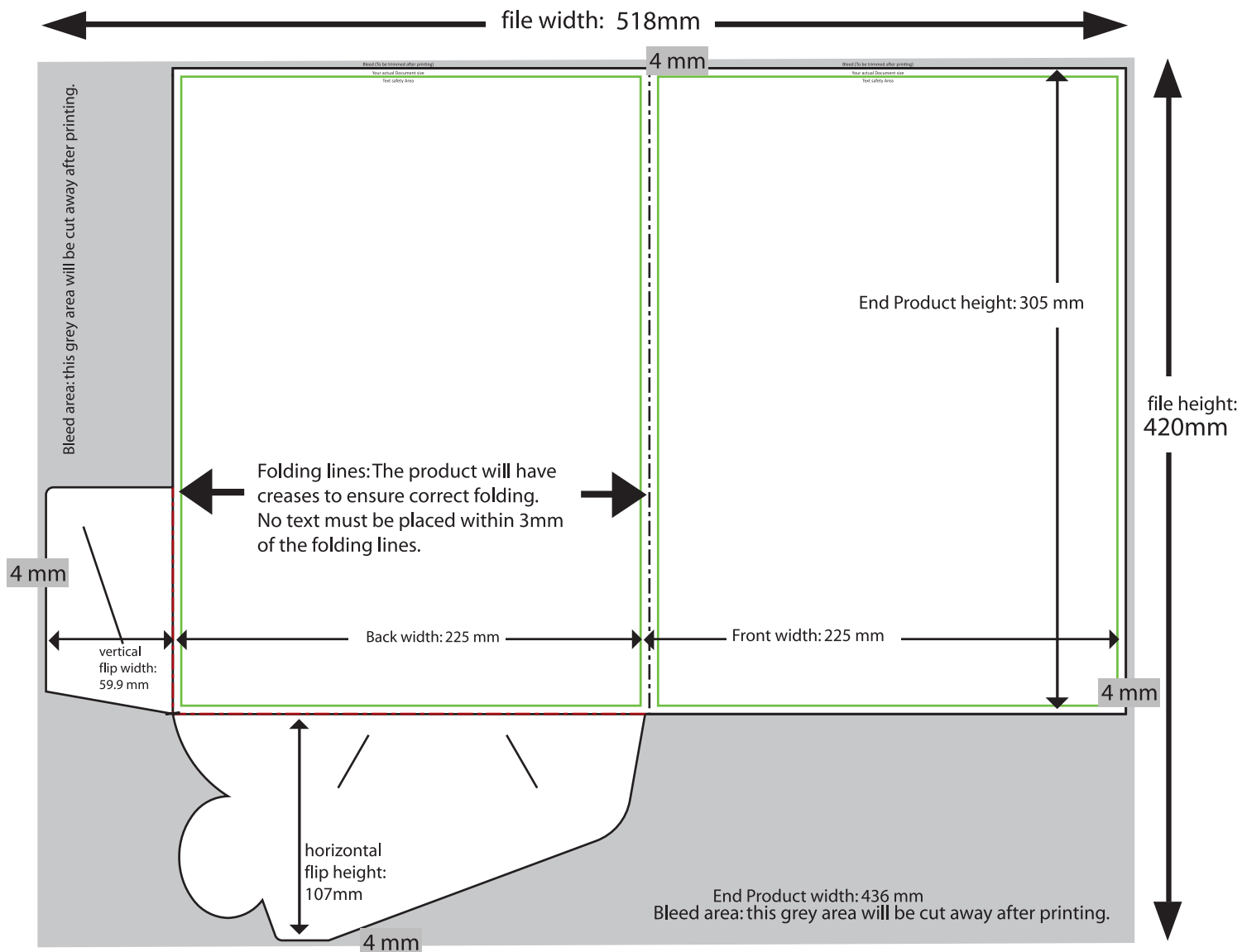


Folder design upload guide

Final size: 510 x 412 mm
Size with Bleed: 518 x 420 mm
Paper Type: 300 g



Tip: Start making the folder design by making a 518 x 420 mm file. Then create a 450mm x 305mm square, and place it 4mm from the top of the file and 4 mm from the right edge of the file. You have now marked the area that will not be cut away, excluding the flips.

Explanation of Bleed, applies to all products.

1.

Uploaded file for business card. Size: 98 x 63 mm

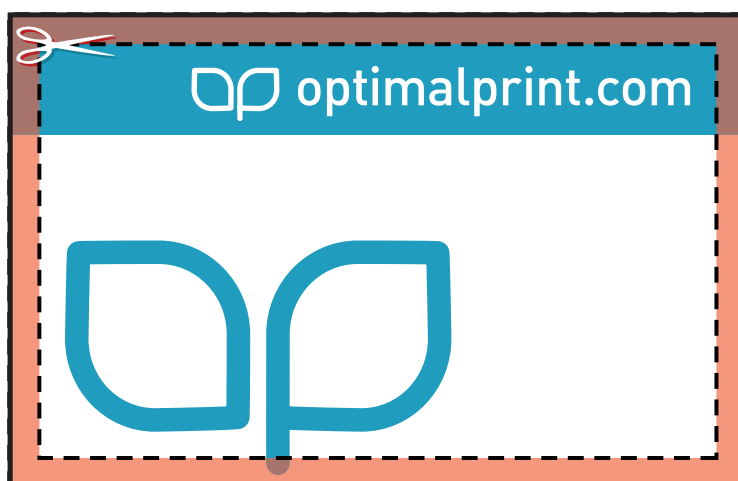


2.

Bleed.

The outer 4mm are cut away.

After printing the cards are cut loose from the large sheets of paper they were printed on. The red area marks what part of the design is cut away.



3.

Product delivered to customer.

Size: 90 x 55 mm



Notice how the bottom of the symbol has been cut away.